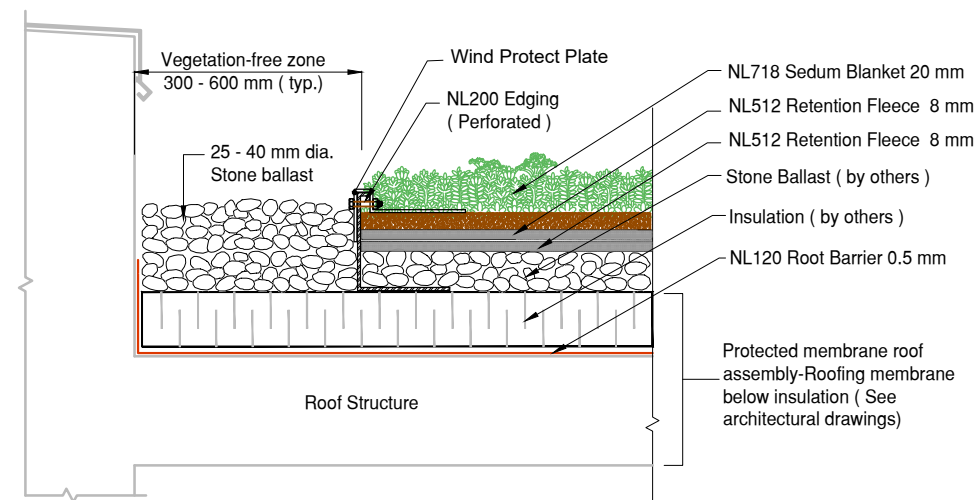
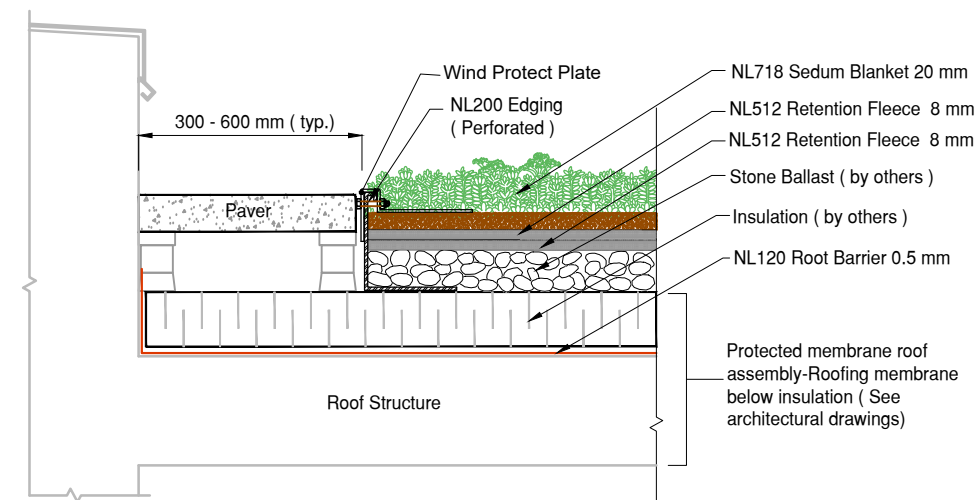


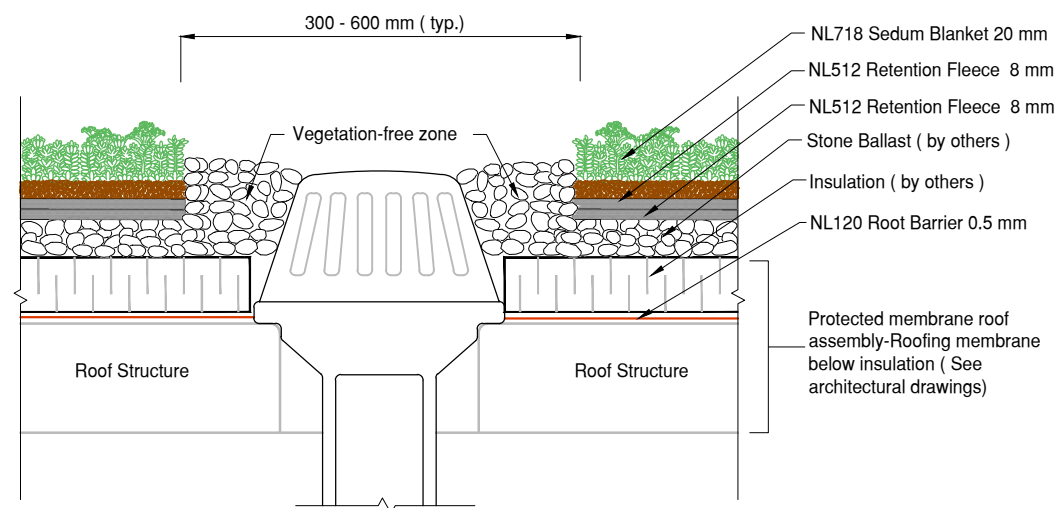
Contractors must verify all dimensions and conditions in the field. any discrepancy must be reported to Next Level Stormwater Management prior to construction. This drawing must not be used for construction unless sealed and signed by the architect. These drawings are the property of Next Level Stormwater Management and must be returned upon completion of the work. © 2017 Next Level Stormwater Management all rights reserved. Not to be reproduced or released in any form without the written authorization of Next Level Stormwater Management.



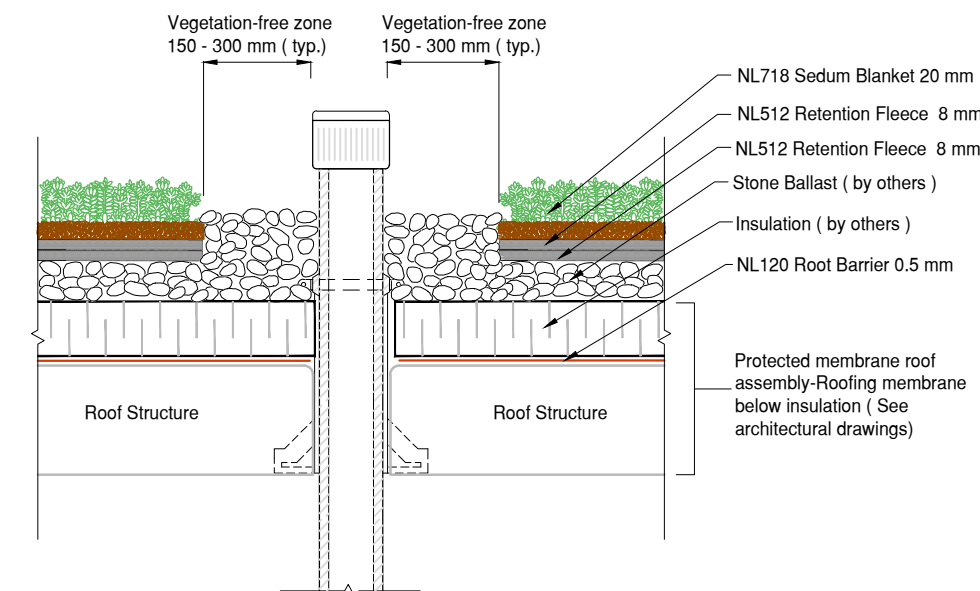
**1**  
**DET** LiteN'Less Classic II 718 with Edge Stone Edge Detail  
Protected Membrane Roof



**2**  
**DET** LiteN'Less Classic II 718 with Edge Paver Edge Detail  
Protected Membrane Roof



**3**  
**DET** LiteN'Less Classic II 718 with Edge Drain Detail  
Protected Membrane Roof



**4**  
**DET** LiteN'Less Classic II 718 with Edge Penetration Detail  
Protected Membrane Roof

Client:

Project Name:

Location:

Date:

Roofing Assembly:

**Protected Membrane Roof**

Drawing Name:

**LiteN'Less Classic II 718**

Drawing No.:

Scale:

NTS

CADfile:  L700e P