

Contractors must verify all dimensions and conditions in the field. any discrepancy must be reported to Next Level Stormwater Management prior to construction. This drawing must not be used for construction unless sealed and signed by the architect. These drawings are the property of Next Level Stormwater Management and must be returned upon completion of the work. © 2017 Next Level Stormwater Management all rights reserved. Not to be reproduced or released in any form without the written authorization of Next Level Stormwater Management.

Client:

Project Name:

Location:

Date:

Roofing Assembly:

Protected Membrane Roof

Drawing Name:

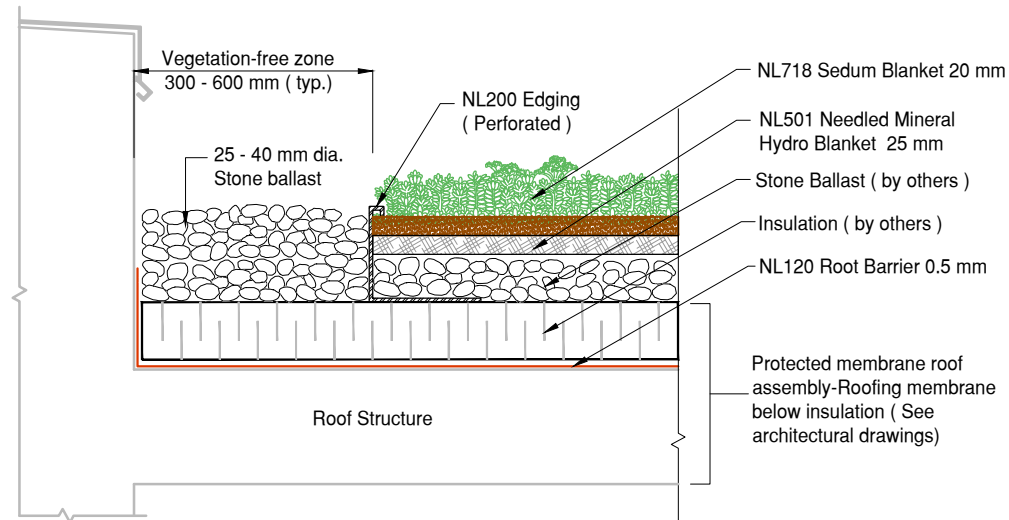
LiteN'Less Advanced II 718

Drawing No.:

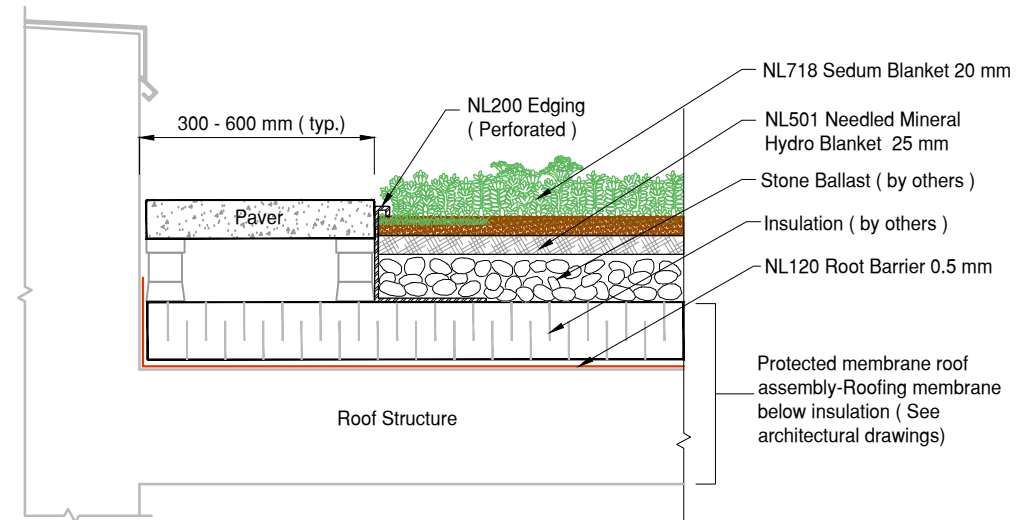
Scale:

NTS

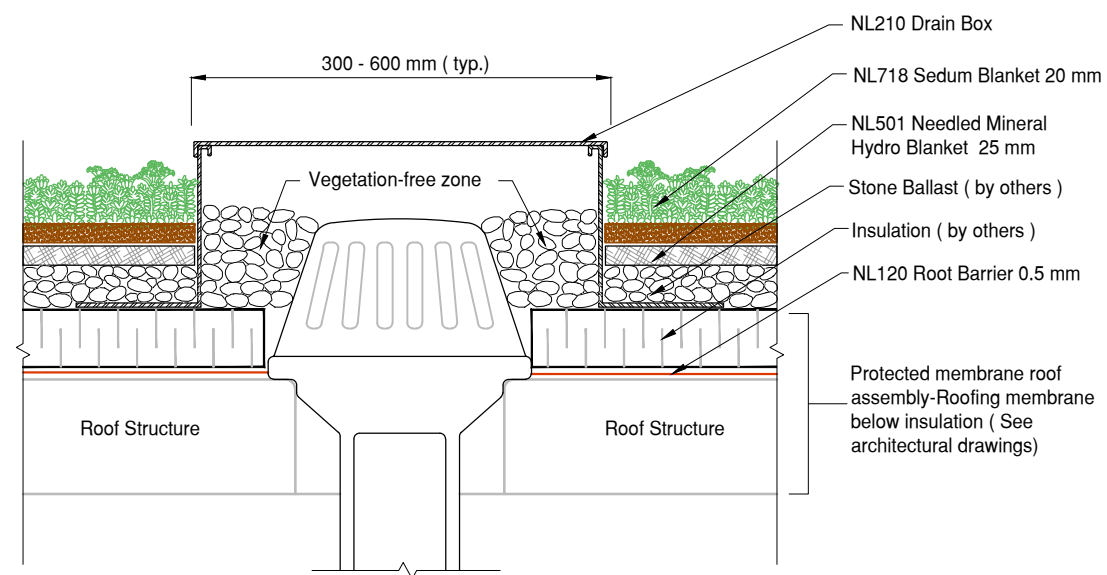
CADfile: L718e P



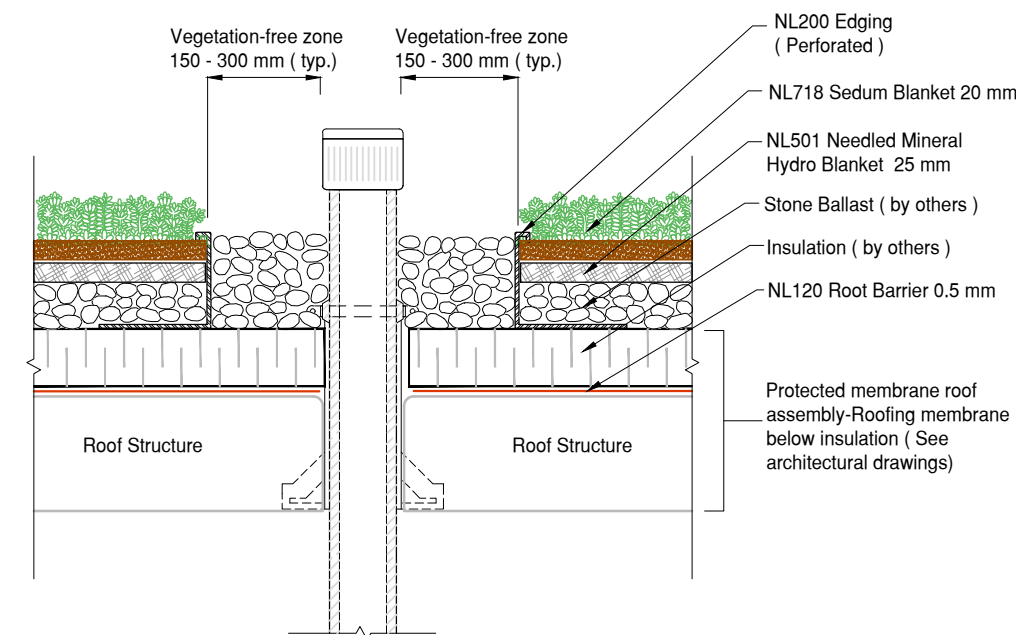
1 LiteN'Less Advanced II 718 Stone Edge Detail
DET Protected Membrane Roof



2 LiteN'Less Advanced II 718 Paver Edge Detail
DET Protected Membrane Roof



3 LiteN'Less Advanced II 718 Drain Detail
DET Protected Membrane Roof



4 LiteN'Less Advanced II 718 Penetration Detail
DET Protected Membrane Roof