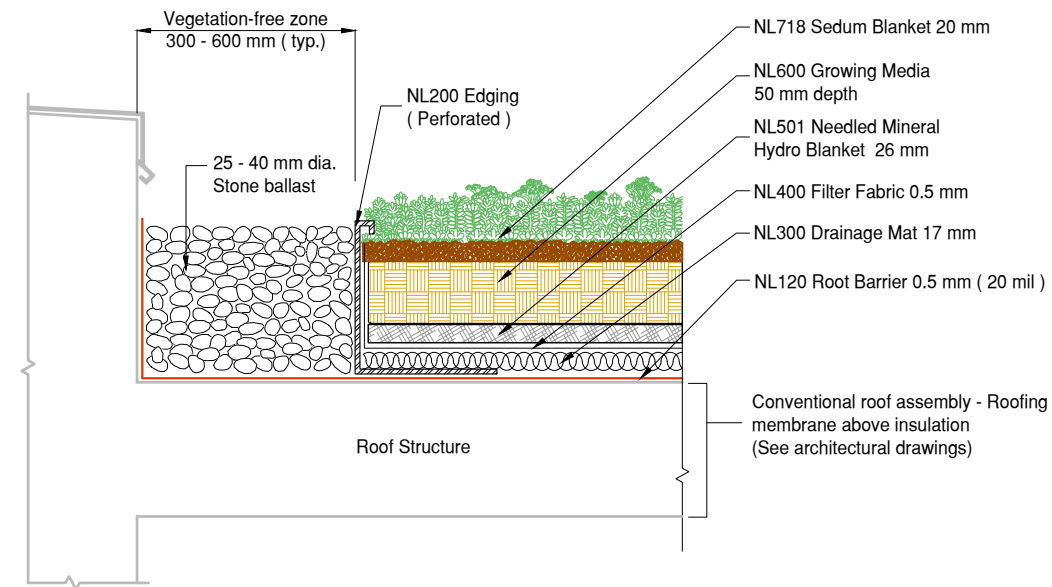
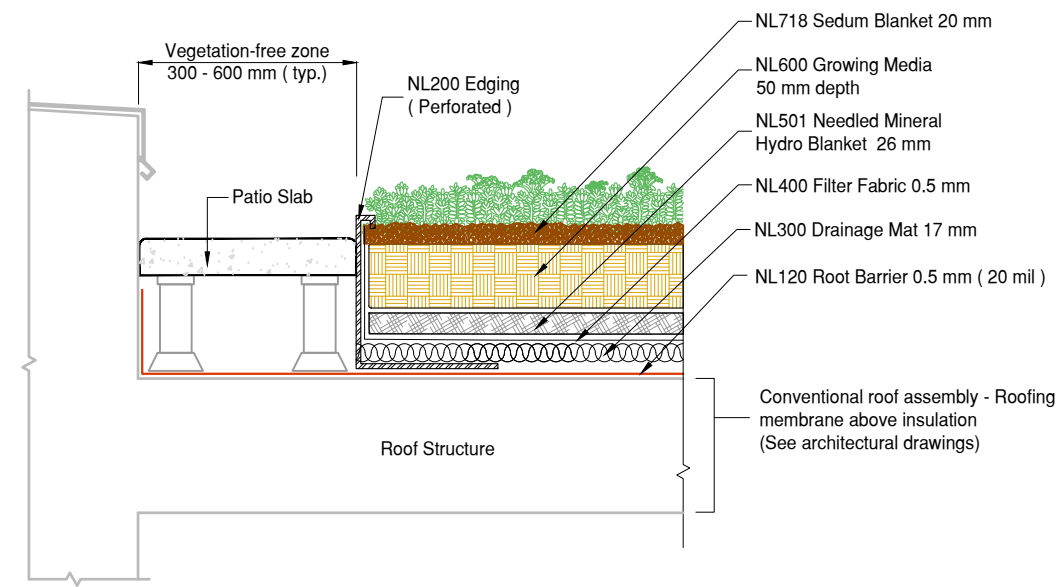


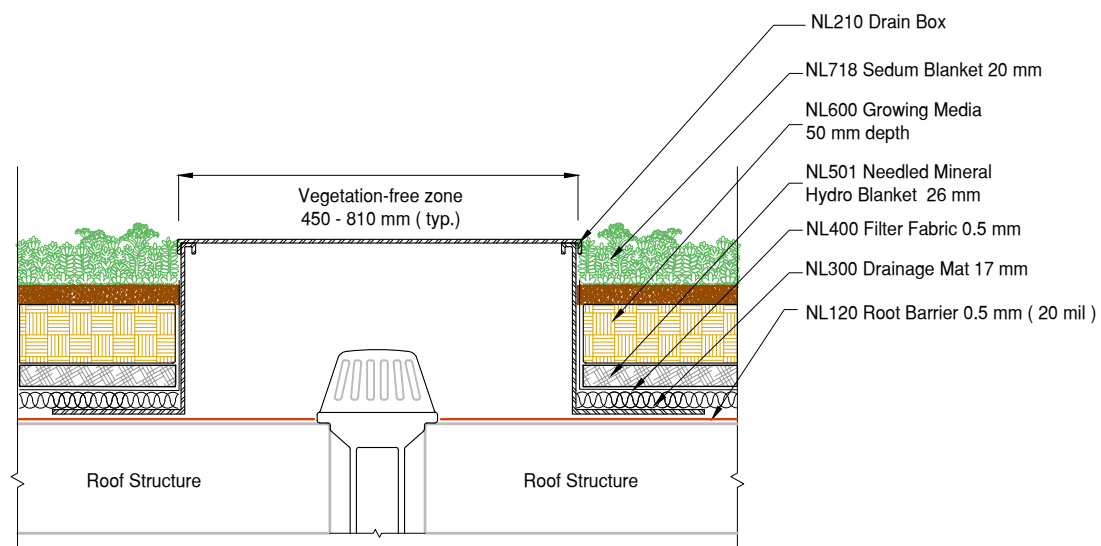
Contractors must verify all dimensions and conditions in the field. any discrepancy must be reported to Next Level Stormwater Management prior to construction. This drawing must not be used for construction unless sealed and signed by the architect. These drawings are the property of Next Level Stormwater Management and must be returned upon completion of the work. © 2017 Next Level Stormwater Management all rights reserved. Not to be reproduced or released in any form without the written authorization of Next Level Stormwater Management.



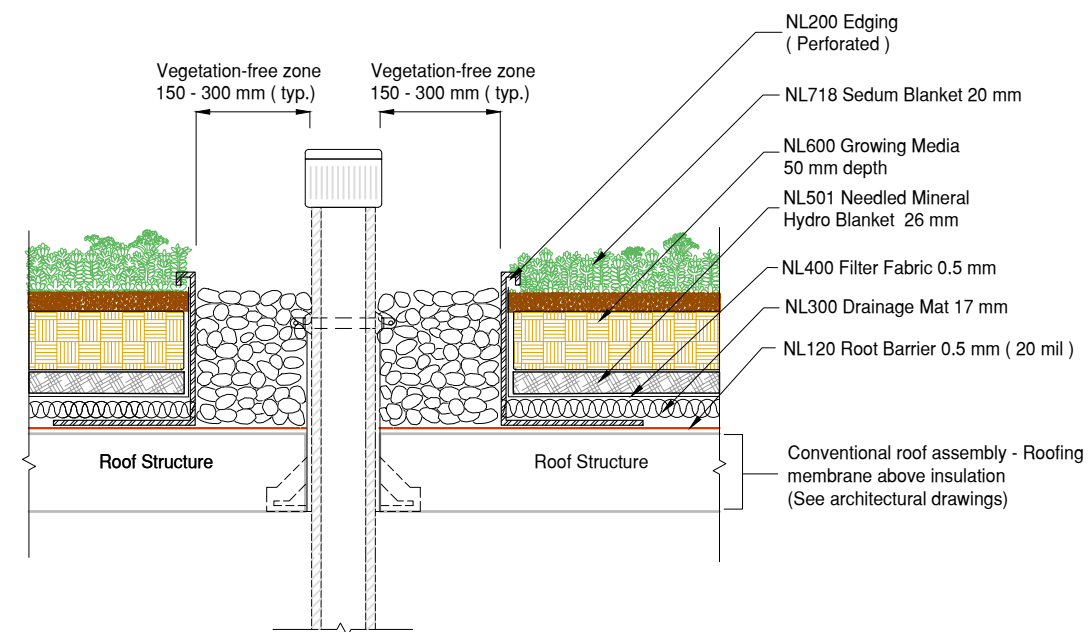
**1** StormCap II System with Edge Stone Edge Detail  
**DET** Conventional Roofing Assembly



**2** StormCap II System with Edge Paver Edge Detail  
**DET** Conventional Roofing Assembly



**3** StormCap II System with Edge Drain Detail  
**DET** Conventional Roofing Assembly



**4** StormCap II System with Edge Penetration Detail  
**DET** Conventional Roofing Assembly

Client:

Project Name:

Location:

Date:

Roofing Assembly:

**Conventional Roofing Assembly**

Drawing Name:

**StormCap™ II**

Drawing No.:

Scale:

NTS

CADfile: